

# CoolKraft™

## Water Cooling Solution

/ For FlexKraft and ModuPulse rectifiers



Provides **optimized water-cooling** to your FlexKraft and ModuPulse installation



High efficiency design based on water-to-water heat exchanger technology.



Standardized cooling solution for 1 to 30kW installations.



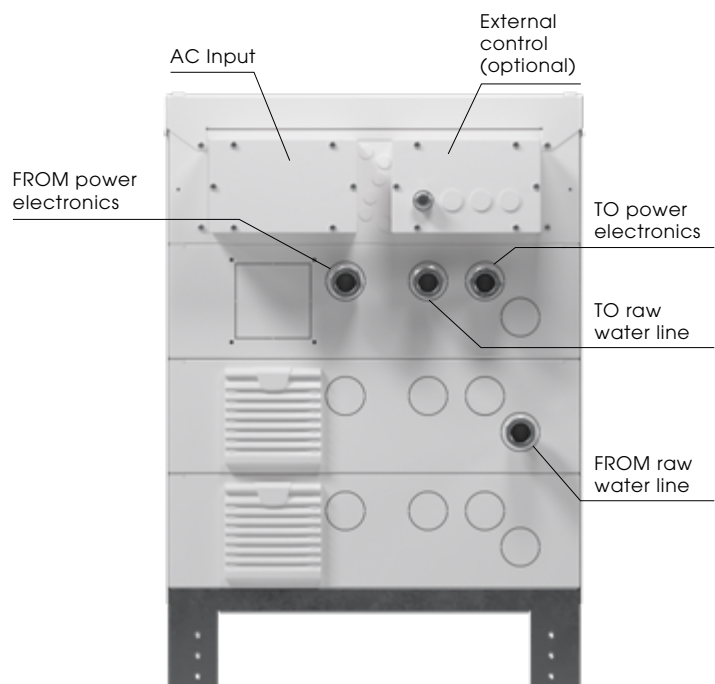
Designed for operating in harsh environments.



Simplicity throughout installation, operation and maintenance.

### DIMENSIONS

Height	870mm
Width	500mm
Depth	610mm
Weight	67kg



Specification is subject to change without notice

# CoolKraft™

## Water Cooling Solution

/ For FlexKraft and ModuPulse rectifiers

CoolKraft is a versatile heat exchanger for cooling FlexKraft and ModuPulse in **harsh industrial environments**. It optimizes rectifier performance and energy consumption by controlling waterflow and temperature. The secondary cooling circuit reduces concerns regarding water quality supply.

### TECHNICAL DATA

#### General

Ambient temperature:	+5°C to +50°C
Protection degree, enclosure:	IP34
Electrical power supply:	380-415V, 50Hz 3-phase
Pressure class:	PN5 (design pressure 5 bar, test pressure 7,5 bar)
Max pipe length to and from CoolKraft:	70m
De-airing:	Automatic
Operation:	Continuous
Fault detection:	Motor-protection, low coolant level

#### Cooling

Max cooling power	35°C
Max coolant temperature to power electronics	35°C
$\Delta T$ between raw water and coolant min.	10°C
Heat Exchanger	Water to Water
Max pressure on cooling circuit	6 bar
Expansion tank inside	5L
Adjustment of coolant temperature TO power electronics	Yes, manual. See instructions to avoid overheating or apparition of condense inside power electronics Default setting: 2

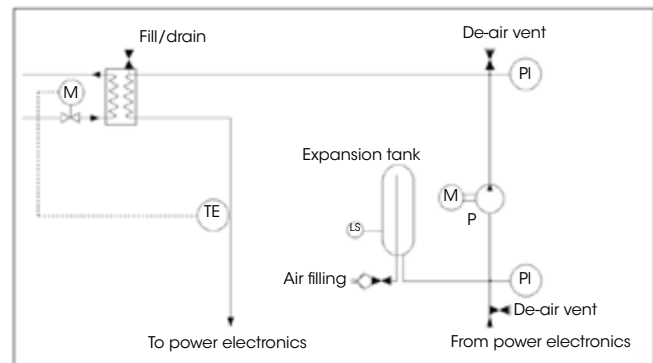
#### Control interface

Manual control	Start/Stop of motor
Remote control	Start/Stop of motor digital (24Vdc)
Remote monitoring	On/Off, Active Fault Yes, digital (24Vdc)

#### Options

- Raw water side strainer (filter) in stainless steel. L 65mm, H 45mm
- FlexKraft or ModuPulse controls start/stop of motor
- FlexKraft or ModuPulse monitors the status of CoolKraft
- Chillers for primary side through partner

#### Block Schematic Diagram



Specification is subject to change without notice